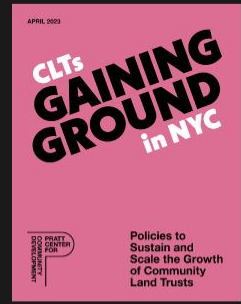


WELCOME TO

GAINING GROUND

What's Next for NYC's
Community Land Trusts?

The virtual program
will begin at 10:30 am



DOWNLOAD THE
FULL REPORT



SPONSORS



New Economy Project

New Economy Project works with community groups and low income New Yorkers to advance public banking, community land trusts, and cooperative and community-led development.



NYC Community Land Initiative (NYCCLI)

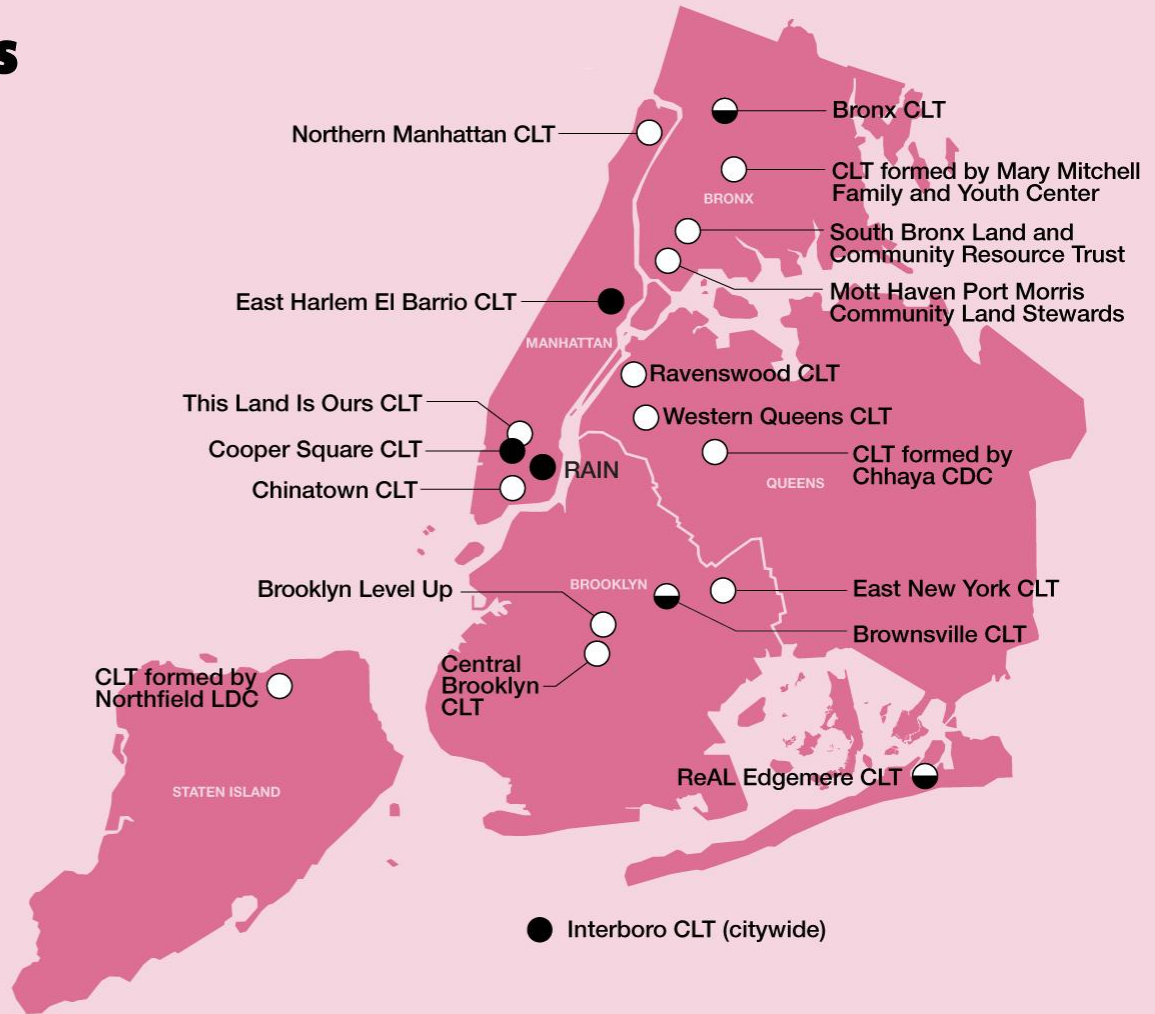


NYCCLI members rally at City Hall in support of the Community Land Act bill package.

Community Land Trusts in New York City

Land Status as of March 2023

- Advocating for Land
- Land Transfer in Process
- Has Land



East New York Community Land Trust

East New York CLT Board and Steering Committee members hold frequent community workshops, actions, and planning sessions, led by and for East New York and Brownsville residents.



East New York Community Land Trust

The East New York CLT is working with tenants at 248 Arlington Ave to purchase and convert the building to permanently affordable tenant-controlled housing.



ReAL Edgemere Community Land Trust

First Workshop hosted by
ReAL Edgemere CLT,
Columbia University
GSAPP, and Spitzer School
of Architecture (CUNY), in
April 2023



ReAL Edgemere Community Land Trust

Green Thumb performing a site visit with at the Garden by the Bay Members (Alexis Foote, Jackie Roger, President and Laquetta Little, Vice President) along with with Lawrence Mortimer, from Councilwoman Brook-Powers office and GreenThumb staff members; Erinn White and Carlos Martinez



ReAL Edgemere Community Land Trust



Mott Haven- Port Morris Community Land Stewards

South Bronx Unite and the Land Stewards' community-based adaptive re-use proposal to transform the abandoned, city-owned Lincoln Detox Center into a center for health (H), education (E) and the arts (ARTS) – H.E.ARTS.



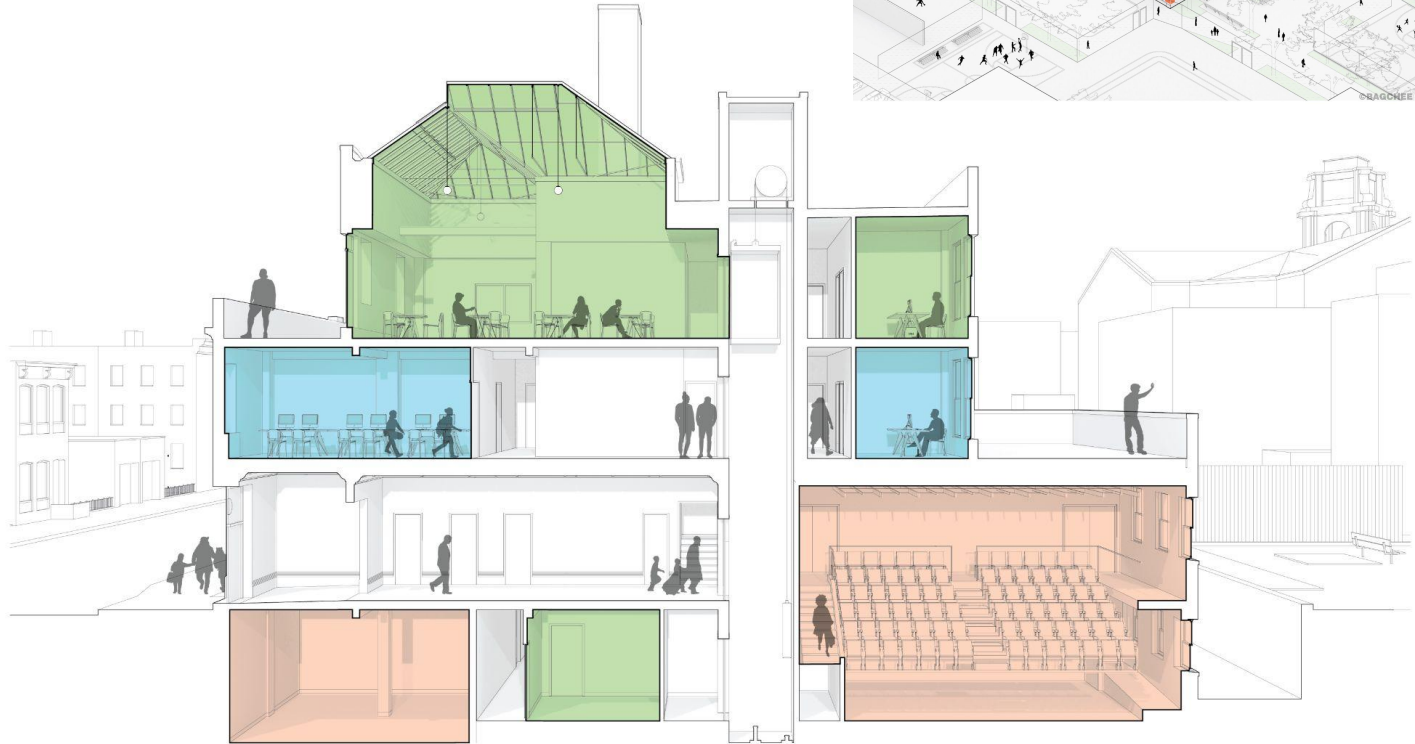
Mott Haven- Port Morris Community Land Stewards

South Bronx Unite and the Land Steward's community-based adaptive re-use proposal to transform the abandoned, city-owned Lincoln Detox Center into a center for health (H), education (E) and the arts (ARTS) – H.E.ARTS.



Mott Haven- Port Morris Community Land Stewards

South Bronx Unite and the Land Steward's community-based adaptive re-use proposal to transform the abandoned, city-owned Lincoln Detox Center into a center for health (H), education (E) and the arts (ARTS) – H.E.ARTS.



APRIL 2023

CLTs GAINING GROUND in NYC

PRATT
CENTER
FOR
COMMUNITY
DEVELOPMENT

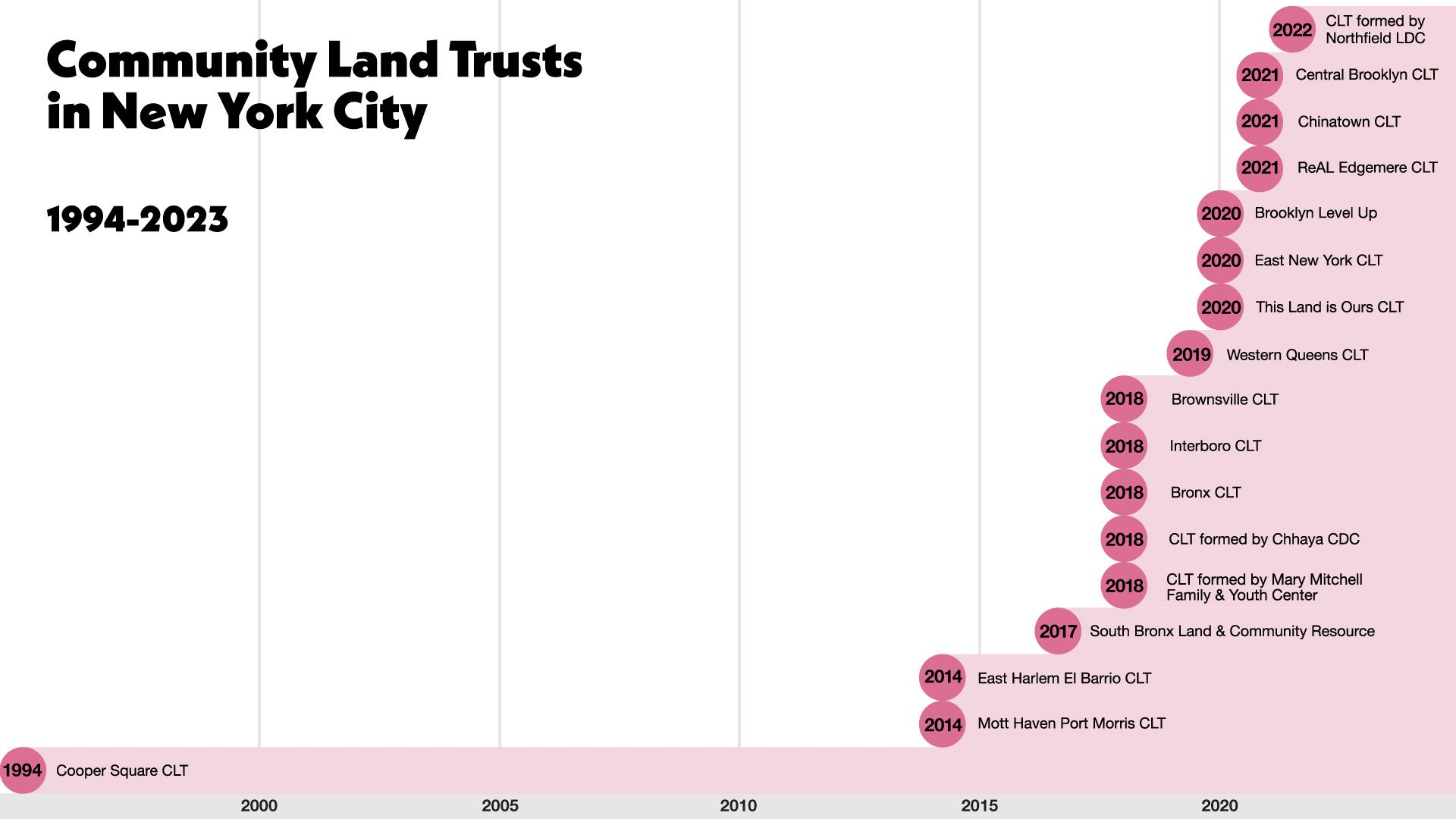
Policies to
Sustain and
Scale the Growth
of Community
Land Trusts



Access the full report at
prattcenter.net/gainingground

Community Land Trusts in New York City

1994-2023



Recommendations

Enact legislation and develop plans to direct land to Community Land Trusts

- A. Commit city-owned land to Community Land Trusts.
- B. Enact racially equitable property acquisition, debt collection, and land bank programs that work in collaboration with CLTs.
- C. Help CLTs acquire privately-owned apartment buildings by giving community organizations and tenants the right of first refusal.

Invest in CLT organizational development, housing and City agency programs

- A. Deliver public funding for CLT organizational development and operations.
- B. Invest in HPD's CLT programs.
- C. Advocate for and commit financing to low-income housing development and operations to ensure deep affordability on CLTs.

Integrate CLTs into the City's housing, economic development & land use plans

- A. Implement community-based, comprehensive citywide planning that incorporates community land stewardship.
- B. City housing plans should specify strategies and goals for making CLTs an affordable housing strategy.
- C. Expand opportunities for CLTs to maintain affordability and community stewardship for commercial, community, and open space.

The Community Land Act Includes

**Community
Opportunity to
Purchase Act**
(Intro 196)

**Public Land for
Public Good**
(Intro 637)

**Tenant
Opportunity to
Purchase
Resolution**
(Res 38)

**Abolish and
Replace the NYC
Lien Sale**

Read more at nyccli.org/CLA

PANEL DISCUSSION

GAINING GROUND

What's Next for NYC's Community Land Trusts?



Zoom Audience
Drop your questions
in the Q&A

GAINING GROUND

What's Next for NYC's Community Land Trusts?





TAKE ACTION!

Learn more about the NYC CLT movement and take action:

nyccli.org/CLA

Stay in Touch

**East New York
Community
Land Trust**

eastnewyorkclt.org

**Mott Haven-
Port Morris
Community
Land Stewards**

sbxclt.org

**ReAL Edgemere
Community
Land Trust**

real.edgemere.clt@gmail.com

Stay in Touch



prattcenter.net

NYC
community land
initiative



nyccli.org



neweconomynyc.org